

## PRESS RELEASE

### **Fulfilling the objective of greenhouse gas-neutral energy supply on the hills of Drillberg: Würth Industrie Service commissions an additional photovoltaic system.**

Würth Industrie Service  
GmbH & Co. KG  
Pia Schmitt  
Press and Public Relation  
97980 Bad Mergentheim,  
Germany

*Bad Mergentheim/Main-Tauber-Kreis.* Climate change and the consequential natural disasters have already controlled the world, thus stressing the urgency of achieving climate neutrality even more. The use of renewable energy instead of fossil fuels is the most sought-after solution on the path to achieving greenhouse gas-neutrality. Würth Industrie Service GmbH & Co. KG, an expert in the field of C-parts management for manufacturing industry customers, intends to lead by example and not only compensate for the rising CO<sub>2</sub> footprint but also reduce it sustainably at the Bad Mergentheim location by implementing smart solutions. The company is contributing towards climate protection with the recent commissioning of an additional photovoltaic system. The sprawling plant covering an area of 2,500 square metres has an output of around 480 kWp, which equates to an estimated output of around 415,000 kWh per year. This output is enough to supply around 140 single-family households with electricity per year. At the Drillberg location, multiple photovoltaic systems are currently operational with a combined output of over 900 kWp and generated volume of over 800,000 kWh.

T +49 7931 91-3409  
F +49 7931 91-4000  
[www.wuerth-industrie.com](http://www.wuerth-industrie.com)  
[Pia.Schmitt@wuerth-industrie.com](mailto:Pia.Schmitt@wuerth-industrie.com)

25.07.2022

“With the deployment of highly efficient photovoltaic modules, we are able to use our rooftops efficiently for electricity generation, and thus able to cut down around 300 tonnes of CO<sub>2</sub> emissions per year”, said Martin Jauss, General Manager at Würth Industrie Service. The expansion of electricity generation plants provides Würth Industrie Service the opportunity to increase self-sufficiency for internal energy consumption. “Solar energy is expected to contribute significantly towards this”, adds Mr. Jauss. The self-generated electricity serves for the company's own consumption, and in addition to the general demand for electricity, it is used directly in logistics, administration and in electric vehicle charging stations. However, the photovoltaic plant implemented recently is not the only source of electricity generation providing green electricity in the Würth Industrial Park. In the last few years, multiple solar power plants have already been implemented. It is thus possible to increase the current output of 432.740 kWp to more than 900 kWp. Additionally, the two combined heat and power plants (CHPs) on the premises make the C-Parts partner more independent from the mainstream electricity market. Long before

the recent expansion of the photovoltaic plant, they were able to independently fulfil more than 30 percent of the total electricity requirement in 2021. Thanks to cogeneration, the CHPs contribute significantly towards conservation of resources. Würth Industrie Service has invested more than EUR 1 million in energy generation plants since the founding of the company until today.

### **Sustainable action in the Würth Industrial Park**

With over 20 years of company history and being a part of the Würth Group, Würth Industrie Service is a traditional company. This also means commitment to the future, and thus also very specifically to the issue of sustainability. Keeping this in mind, a specially created CSR (Corporate Social Responsibility) committee combines all the company-wide activities, where operational as well as strategic goals are defined, measures are taken and progress as well as successes are measured. Within the scope of its sustainability strategy, the company is committed to holistic environmental protection, and has a firm focus on avoiding burden on the natural environment and on responsibly handling the natural resources. This includes, for example, the continuation of an eco-friendly disposal strategy, careful land utilisation, sustainable logistics and efficient customer solutions as well as the consistent advancement of digitalisation. The focus is on topics like energy storage, renewable energy production and prevention of CO<sub>2</sub> emissions. With the currently implemented and planned measures, Würth Industrie Service is setting the important course for greenhouse gas-neutral energy supply on the hills of Drillberg.

Further information for those interested is available in the podcast episode 16: "From self-generated electricity, equal opportunities and collected screws - what does sustainability mean for Würth Industrie Service." Read more: [www.wuerth-industrie.com/upwards](http://www.wuerth-industrie.com/upwards)

**Photo material:**



Photo 1: Aerial photo new Photovoltaic plant.jpg

Caption 1: With the most recent implementation of a photovoltaic plant, Würth Industrie Service laid an important foundation for greenhouse gas-neutral energy supply.

Photo source 1: Paul Dürr, Würth Industrie Service GmbH & Co. KG

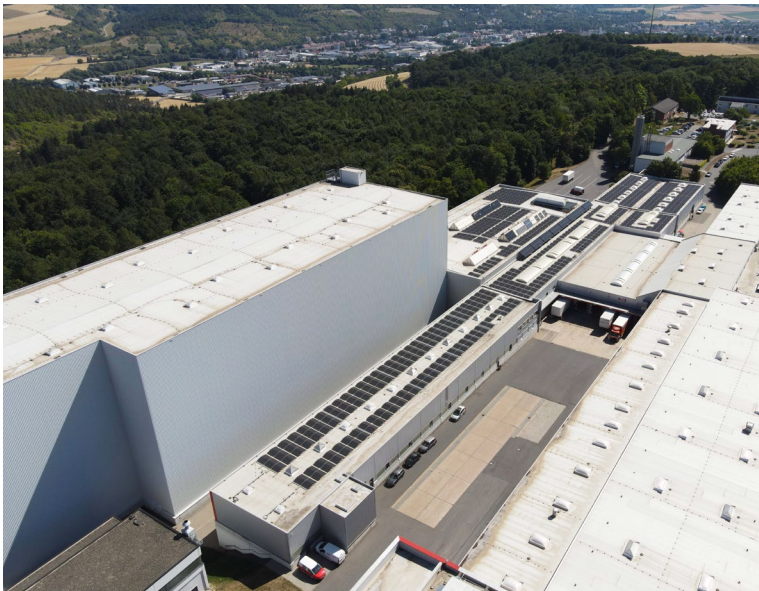


Photo 2: Aerial photo further Photovoltaic systems.jpg

Caption 2: In the last few years, multiple solar power plants have already been implemented at the Drillberg location.

Photo source 2: Paul Dürr, Archives of Würth Industrie Service GmbH & Co. KG

#### Brief profile of Würth Industrie Service GmbH & Co. KG

Within the Würth Group, Würth Industrie Service GmbH & Co. KG is responsible for the supply of the industrial sector. Since its foundation in 1999, Würth Industrie Service is located at the Industriepark Würth in Bad Mergentheim, Germany with over 1.700 employees. As a complete C-Parts provider, the company offers its customers a specialised product range of over 1,100,000 items: from screws, connection and fastening technology, tools to chemical-technical products and occupational safety. In addition to the extensive standard range, the strength of the company lies in its customer-specific, logistical and dispositive supply and service concepts as well as in special parts. Under the service brand "CPS® - C-Product Service", the company offers modular solutions, which are customised as per customer-specific requirements. Thereby, the consumption-based and demand-based systems significantly rationalise the processes for purchase, logistics and quality assurance and enable the procurement of small parts in a cost-optimised manner. Logistic and dispositive services such as shelving systems with scanners or a just-in-time supply using Kanban bin systems contribute significantly to increasing the productivity.